

Commentary on Relative Deprivation and Social Justice

SN28 Appendix 4: Annette Scambler's version

John F Hall

[Draft only: 28 August 2014]

[Relative Deprivation and Social Justice 1966](#) (archived at UKDS as SN 028)

Previous appendices show how the original data from 1962-63 and the SPSS portable file **d028.por** were used to create file **SN28.sav**. Various modifications were made to this file, the latest version being **sn28_jfh4a.sav** in which there are 1415 cases and 280 variables.

This note details the re-creation of the SPSS file **DEPRIVED** as used by Annette Scambler for use in teaching at Surrey in 1975. It has the same 1415 cases and the same 103 variables (with the addition of a serial number) but as the 1975 file, but with modified labels, correct measurement levels and missing values, plus some minor recodes. Hopefully this will be easier to navigate and provide a useful teaching aid.

Extract from [user guide](#)

General Information

- 1 The file is called DEPRIVED
This is a shortened version of the main RUNCIMAN file.
- 4 There are 1415 cases in the file
- 5 The number of variables is 103.
6. The file contains the following information
Each variable has a unique name, and a complete order list of these names is contained on page 1. Each name is fully labelled in the file to make identification easier. Full value (code) labelling is supplied for all variables.
- 7 No missing values have been created. It is simple for the user to create his own as needed using the SPSS specifications.
- 8 The file is created as an SPSS file and is for use only with the SPSS package. All information relevant to the use of the package is available separately. Before using the computer make sure you have the most up-to-date information.
- 9 The file should be used in conjunction with the following
W G Runciman 'Relative Deprivation and Social Justice'
A study of attitudes to social inequality
in twentieth century England.
Pelican, 1972 (first published by Routledge
& Kegan Paul, 1966).

The DEPRIVED file variable list

The variables are contained in the file in the following order. This order is crucial to the SPSS system and must always be adhered to when referencing variables.

Variable List

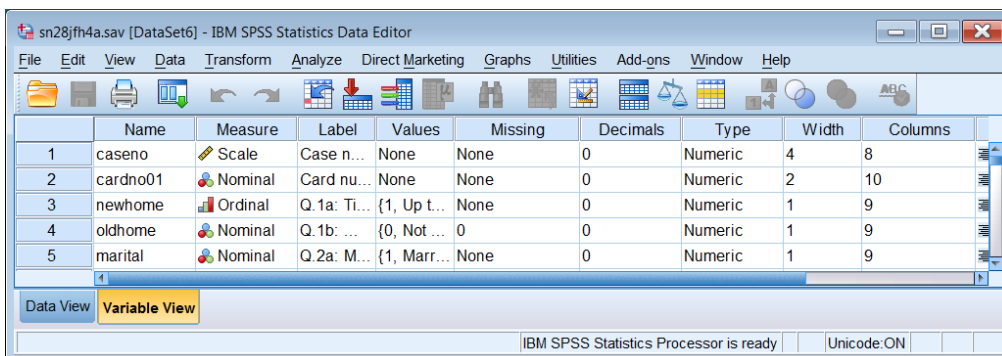
NEWHOME OLDHOME MARITAL BIRTHSNO KIDSDIED KIDSLIVE LEAVESCH TEENLIVE
TEENSCH FEESCHS MOREEDUC EDUCATYPE MADWELL HEAD ADULTS CHILDREN
INFANTS HOUSENO WORKNO EMPLOYED WIFEWORk FIRSTJOB FINANCES
DOBETTER APPROVE MANUAL MANWHITE FOREIGN AFFECT HOW TV PHONE
CAR FRIDGE WASHMACH RECORDPL CHEATING WANTTV WANTPHN WANTCAR
WANTFRG WANTWASH WANTRPL WANTCH NONEEDS OWNHOUSE FURCOAT TRAVEL
SPAREBED TRAINFST EDUCFEE LKHOUSE LKCOAT LKTRAVEL LKBED LKFSTTR
LKEDFEE OTHHOUSE OTHCOAT OTHTRAV OTHBED OTHFSTTR OTHEDFEE MOVE
WIFESAT WFNOTSAT SATOTH NOSATOTH HUSPROS PROS UNEMPROS PREFPROS
CASHNEED SONJOB SONWCHJB SONUNIV SONOX CLASS WCHCLASS PAOCC
PACLASS VOTENOW VOTECHG VOTETHEN OTHVOTE GOVGGOOD LORDS WELSTATE
FAMFST RENT LEGALAI DOLEPAY UNIVFREE RELIGION CHURCH LIFESTYL
ACCENT AGE SEX OCCUP EDUCFIN INCOME WIFECASH

VARIABLES = 103

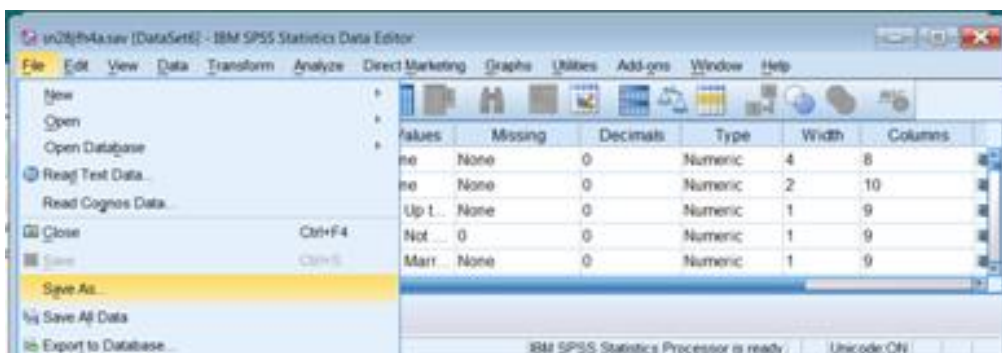
Some questions on the original interview schedule have been omitted from this data file.

Omitted Questions - 9(b), 12(c),(d),(e) and (f) part, 13(d);
14(b), 17(b), 20(c) and (d), 22(d) and (e), 23(b);
24(a),(b) and (c), 25(b), 28(b) and (c); 30(a) and (b).

The new file has all 1415 cases and 104 variables (including an additional variable **casenum** derived from the row number of the case in the SPSS file) This was done by opening the full file **sn28jfh4a.sav**

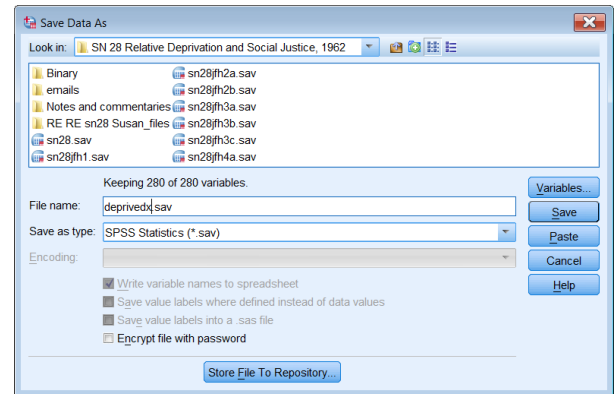
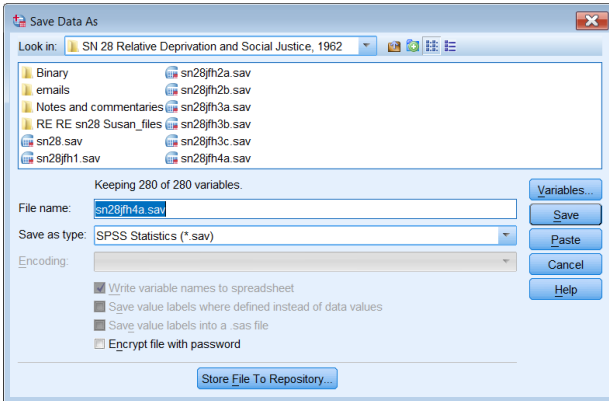


.. using **.File >> Save As ..**



Change **sn28jfh4a** to

deprivedx



Press  and the new target file is saved in same folder as the source file.



File **deprivedx.sav** still has all variables. This is a trick in SPSS to obtain the full pathway of the destination file (saves me having to write the full spec myself, possibly getting it wrong).

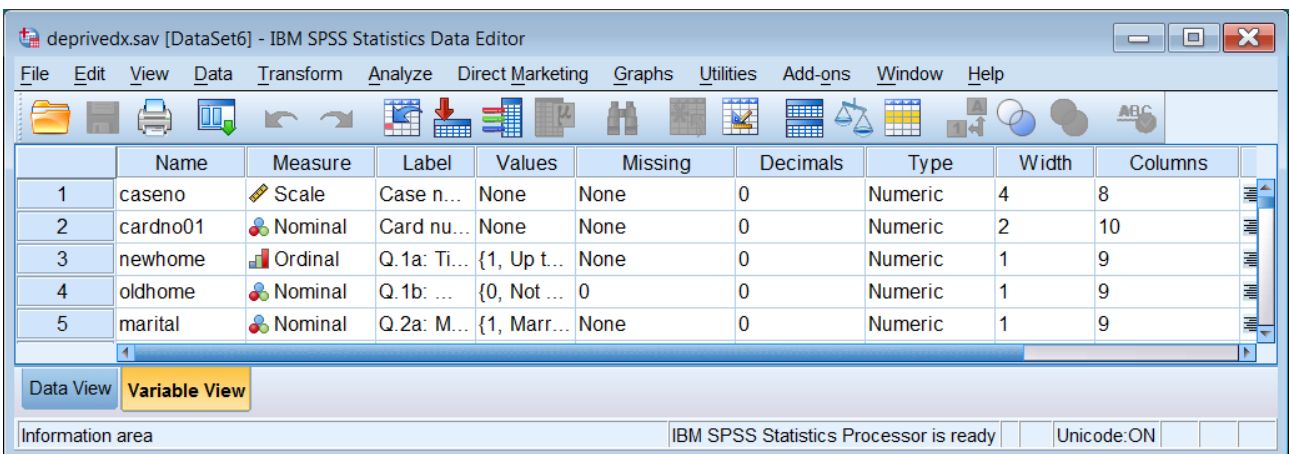
My SPSS settings make sure that all syntax (including that automatically generated by SPSS) is repeated in the SPSS output viewer, in this case:

```
SAVE OUTFILE='C:\Users\John\Desktop\Research\Surveys\SN 28 Relative Deprivation and Social '+'  
'Justice, 1962\deprivedx.sav'.
```

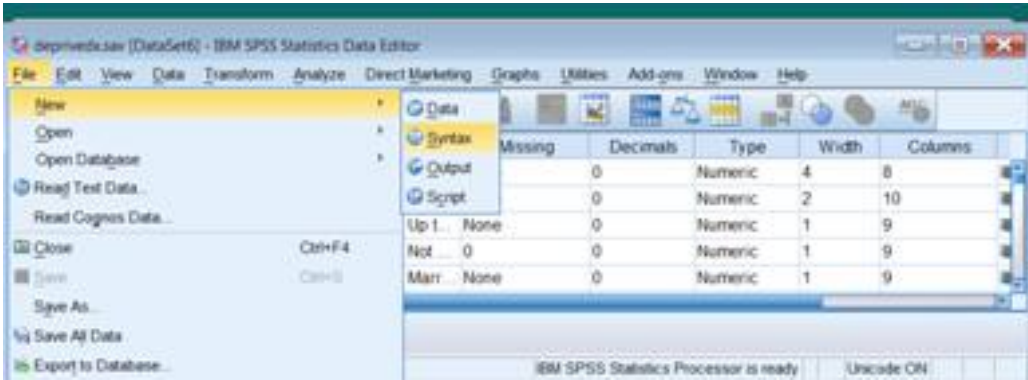
This gives me the full (and correct) pathname of the file I wish to save in the folder from which I am working.

```
'C:\Users\John\Desktop\Research\Surveys\SN 28 Relative Deprivation and Social Justice, 1962\deprivedx.sav'
```

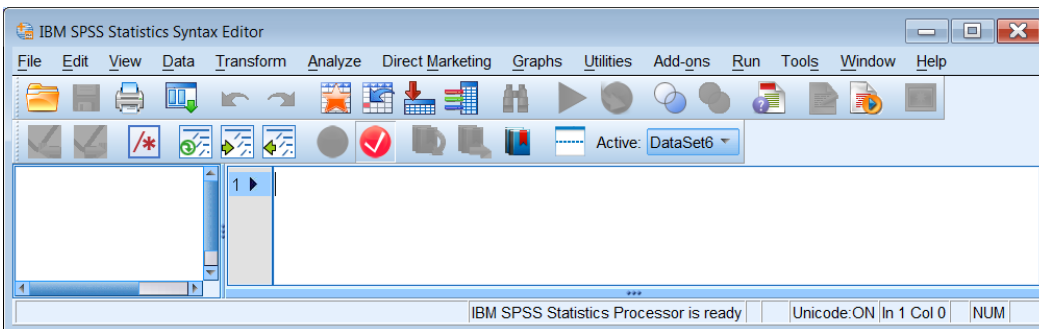
The full command is generated by SPSS when using **File >> Save As ..** and can now be copied from the SPSS output *.spv file



File >> New >> Syntax

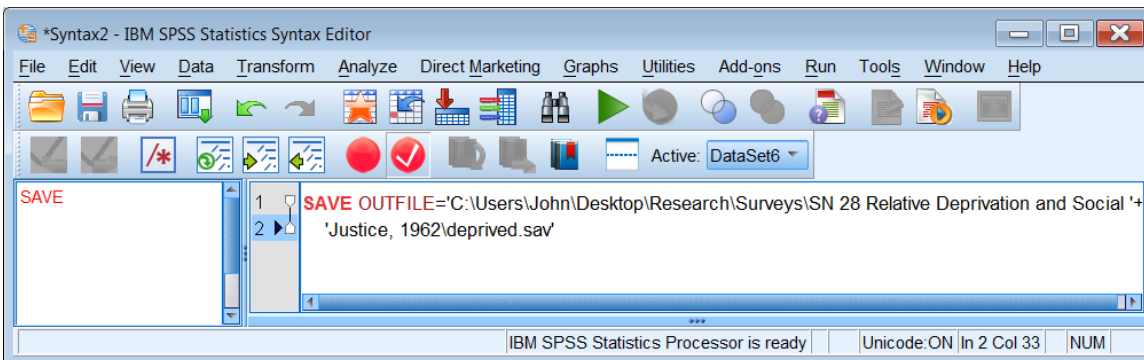


. . to open a new syntax editor:

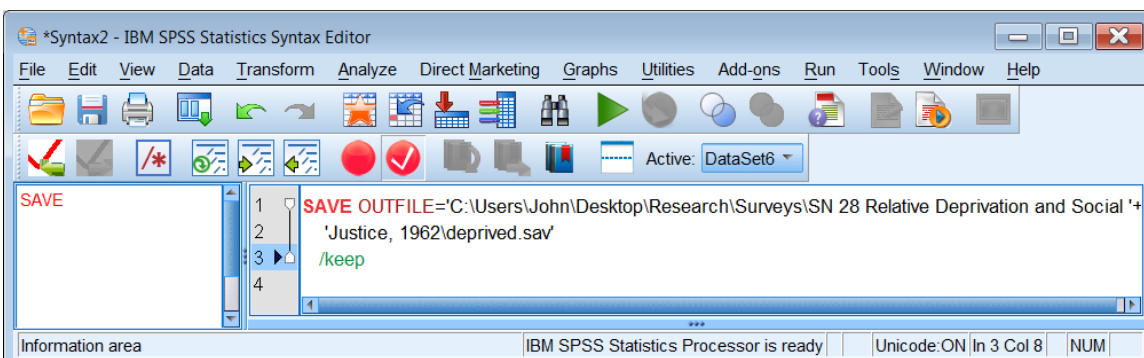


Copy the SAVE command from the spv into the syntax editor:

SAVE OUTFILE='C:\Users\John\Desktop\Research\Surveys\SN 28 Relative Deprivation' +' and Social Justice, 1962\deprived.sav'



The **SAVE** command is shown in red because the command is not complete. To select the only the variables from Annette's list we need to use the **/KEEP** subcommand:

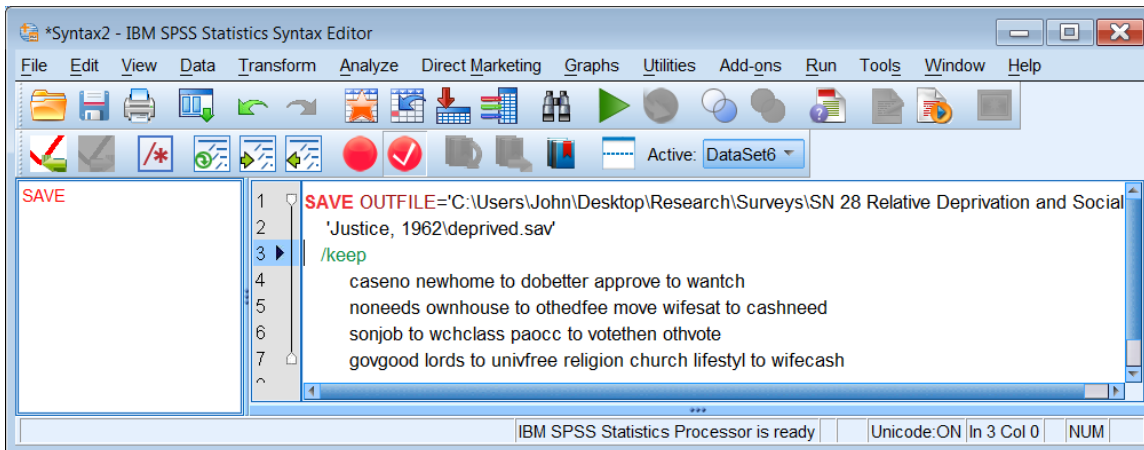


Now comes the tedious bit.

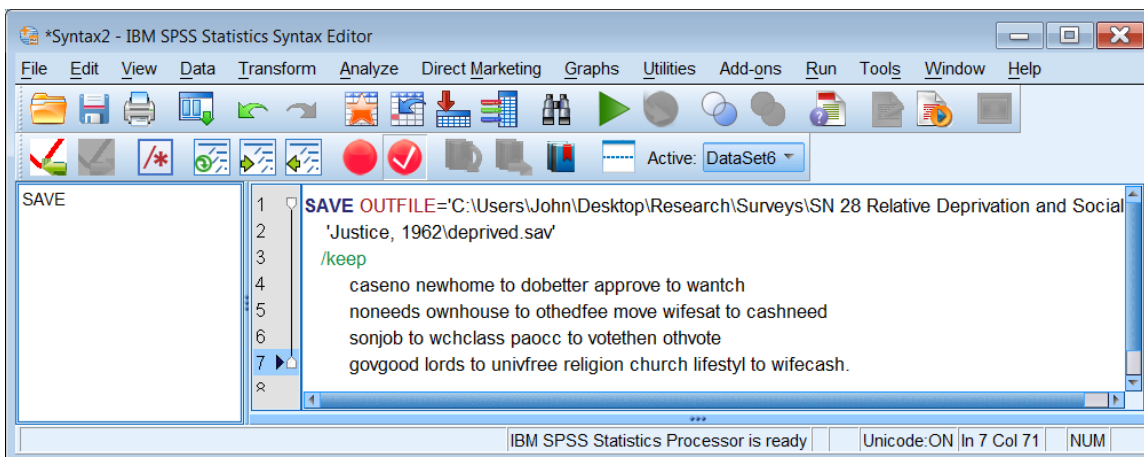
With Annette's variable list on screen, scroll down the **Name** column in the *.sav file and build up a list of the variables you want to keep: luckily most of them are in contiguous blocks.


```
caseno newhome to dobetter approve to wantch
noneeds ownhouse to othedfee move wifesat to cashneed
sonjob to wchclass paocc to votethen othvote
govgood lords to univfree religion church lifestyl to wifecash
```

Copy this list into the syntax editor:



SAVE is still red: add a full stop at the end of the last line:





.. and press the green arrow 

The syntax is repeated in the output file:

```
SAVE OUTFILE='C:\Users\John\Desktop\Research\Surveys\SN 28 Relative Deprivation and Social '+
'Justice, 1962\deprived.sav'
/keep
caseno newhome to dobetter approve to wantch
noneeds ownhouse to othedfee move wifesat to cashneed
sonjob to wchclass paocc to votethen othvote
govgood lords to univfree religion church lifestyl to wifecash.
```

and the new file is saved to the same folder as the source file:

 deprived	28/08/2014 16:44	SPSS Statistics Data Document	180 KB
 deprivedx	28/08/2014 16:12	SPSS Statistics Data Document	455 KB

After checking that the new file has all the variables in Annette's list (and none that aren't) the intermediate file can be deleted.

[Next job is to work on some exercises]