

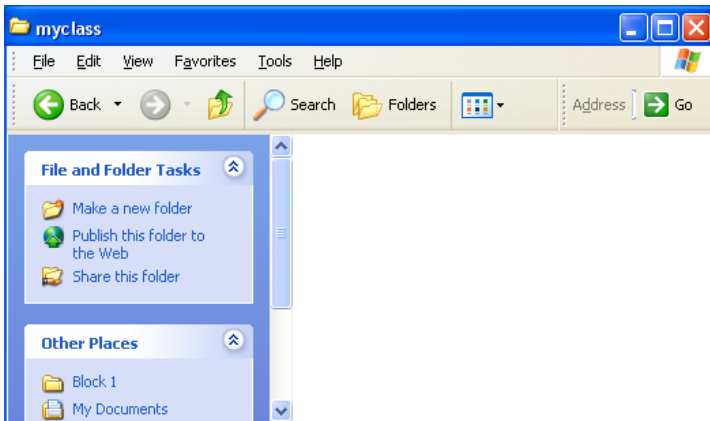
Block 1 - From questionnaire to data file

1.2.2 Preliminary data exercise

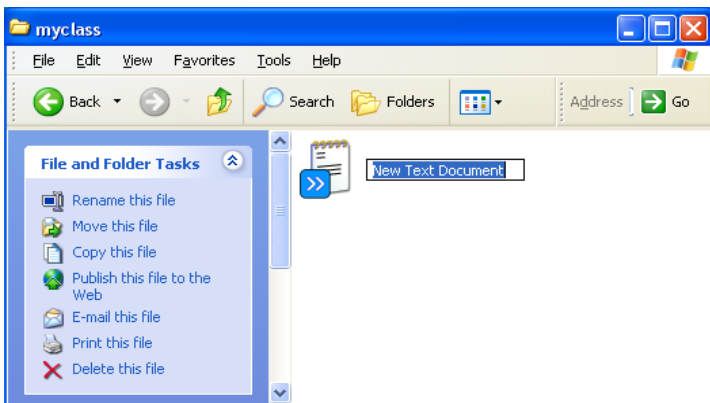
[Updated 23 August 2010]

For this exercise you will need your completed data transfer sheet in front of you, even if you do it with imaginary data.

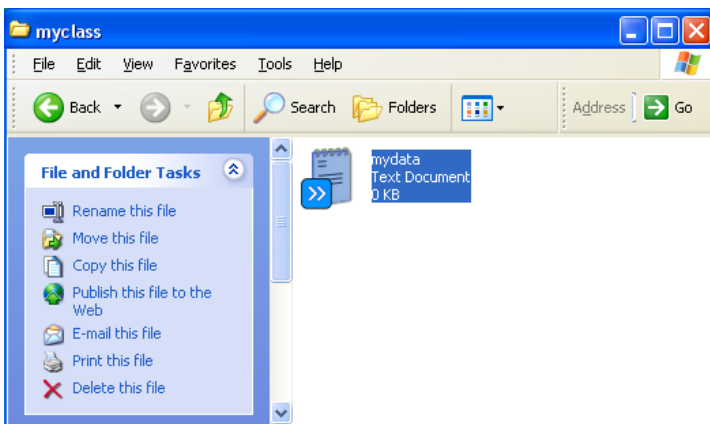
Create a new folder **myclass** in your desktop or on a floppy in drive **a:** and double-click to open it



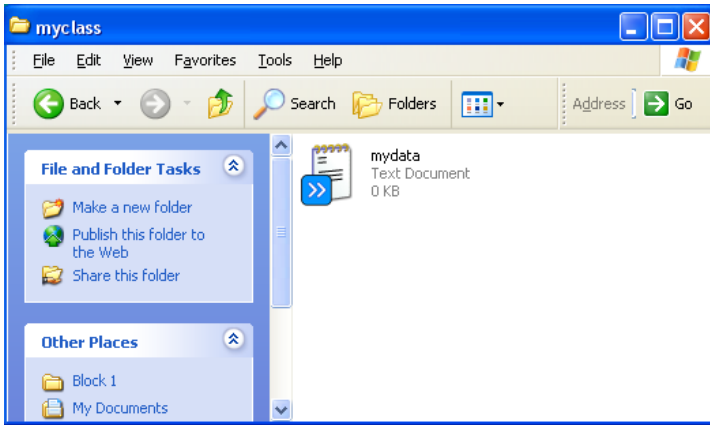
Right mouse click to bring up the menu



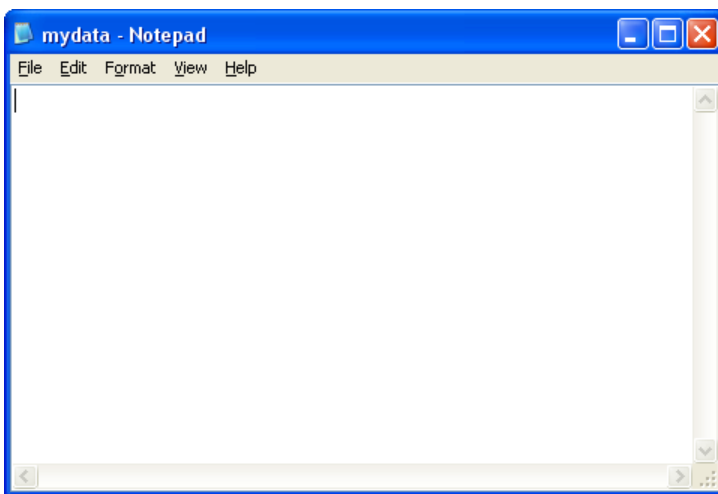
then click on **New > Text document**, write **mydata** in the box:



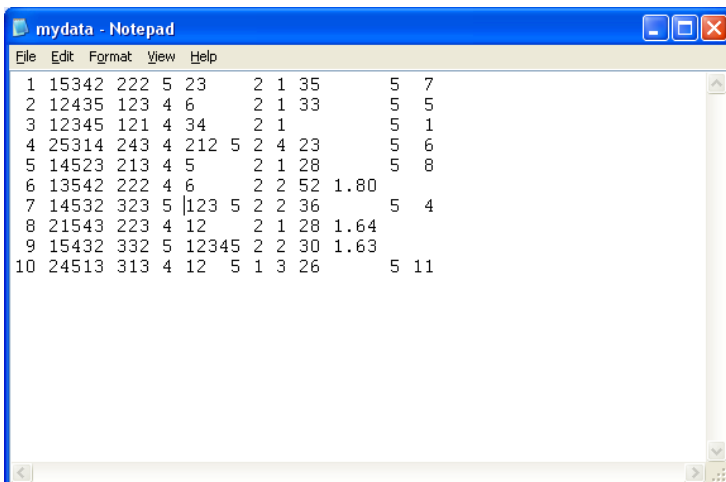
and press the **[ENTER]** key



Double click on file **mydata.txt**



and carefully type in your data (including the blanks) from the transfer sheet, eg:



When you've finished, there's no easy way to check the accuracy of your typing other than to place the cursor at the beginning of a line and count how many times you have to press the right arrows to get to a particular point. Don't worry about it: this is for practice only. There's a file [myclass.txt](#) on this site containing the complete data we shall be using in the main exercises.

Click **[CTRL]+S** to save the file, then close it.

Now go to **1.2.3 First look at data from a real survey**

[\[Back to Block 1 menu\]](#)